



Chelsea Moorings Saga

FLOOD OF OBJECTIONS



Houseboat designs proposed by Cadogan Pier Ltd.

We reported in our 2016 Newsletter that the new owners of the operating companies for Cadogan Pier and the Chelsea Yacht and Boat Company (for Chelsea Reach), and therefore the Port of London Authority licensees for those moorings, intended to seek significant changes at Cadogan Pier.

The Cadogan Pier Moorings have always been licensed for leisure boats only and with one exception, Houseboat Kaipaa for a resident pier master, RBK&C has only ever given consent for leisure boats, as opposed to residential houseboats, to be moored there. The Cadogan Pier moorings therefore provide specifically for mooring leisure

vessels, normally kept at those moorings and sailed for leisure purposes, or passing vessels and working boats that may moor there on an occasional basis at the only moorings in Chelsea accessible on a 24hour basis regardless of tides.

The Chelsea Reach moorings, on the other hand, have for many years been for residential houseboats, a maximum of 60. That community is represented by the Chelsea Reach Boat Owners Association (CRBA) and actively opposes the CLEUD. Permanently moored vessels, leisure boats at Cadogan Pier and houseboats at Chelsea Reach, *Article continues column 2, page 2*

Cheyne Walk Trust



ANNUAL GENERAL MEETING 2017

The Cheyne Walk Trust AGM and Autumn Reception for 2015 will take place in Petyt Hall, Chelsea, by kind permission of the Vicar, The Rev. Canon David Reindorp DL, starting at 6.30 PM. The short AGM will be followed by a talk at 7 PM by Dr Georgia Toutziari, author and art historian, who will speak on Anna Whistler, mother of the artist James McNeill Whistler. She will be happy to take questions. The traditional champagne reception will follow and invitations have been sent to members for whom the event is free. Members' guests are welcome to attend and make a £10 contribution at the door. ●

AGM 2017



Tuesday 8th November 2017 at Petyt Hall, Chelsea Old Church, 64 Cheyne Walk, Chelsea.



On other PAGES

PAGE 2

Chelsea Moorings Saga continued

PAGE 3

Seal of Approval/ Chelsea Property

PAGE 4-5

Chelseas New National Army Museum - Ready for Action

PAGE 6

In Memoriam - David Le Lay/ 'The Crown'

PAGE 7

Portrait of a Lady



Cadogan pier at present.



Houseboat designs proposed by Cadogan Pier Ltd.



Houseboat designs proposed by Cadogan Pier Ltd.



Houseboat Flagship at high tide.

are subject to the planning controls exercised by the Council of RBK&C.

All of Chelsea riverside is embraced by the requirements of the Local Development Framework (LDF), including the Unitary Development Plan (UDP) extant policies that provide guidance as to what is acceptable in planning terms along Chelsea Riverside. The whole of the riverside is covered by the Thames Conservation Area designated in 1981. Specific planning guidance for permanently moored vessels is further set out in the endorsed Thames Conservation Area Proposals Statement 1983. This requires that they be 'boat-like' in character, comply with the traditional nature and scale of moored vessels and the riverside environment. Further guidance is also set out under the London Plan, specifically to protect the open character of the Blue Ribbon Network.

In early May 2017, the Council for RBK&C advised that Cadogan Pier Ltd had submitted an application for a Certificate of Lawful Established Use ("CLEUD") in respect of Cadogan Pier that seeks to have Cadogan Pier recognised as one single planning unit with a mix of uses including residential purposes. This last use would include Houseboats and therefore displace many of the existing leisure vessels.

The applicant has widely expressed

intentions to develop large multi-story residential houseboats and has already, without seeking planning consent, moored Houseboat Flagship at the pier. At high tide, Flagship obscures views of the GdII* Albert Bridge and Battersea Park from Chelsea Embankment and demonstrates the CLEUD's potential dramatically to impose on the river-scape. The applicant has proposals to introduce boats even larger than Flagship and, potentially, to extend the pier further east towards Chelsea Bridge. Residents believe the result would be catastrophic and create irrevocable damage to the oft painted and much loved heritage Thames river-side.

The CLEUD application has raised very considerable concern in the community and has so far (27 September 2017) generated more than 340 individual written objections. These have been submitted by residents, residents' associations and local bodies including: the Chelsea Society, Battersea Society, Cheyne Walk Trust, West London River Group, Royal Hospital Chelsea, Chelsea Physic Garden and Chelsea Reach Boat Owners' Association. All six councillors of the Royal Hospital and Chelsea Riverside Wards have also submitted objections to the application. Concern is so great that we understand a media campaign to

raise wider interest is being prepared.

Queen's Counsel Legal Opinion sought by the CRBA with support from residents and the CWT considers that the legal case for granting the CLEUD has not been made. Further, should the CLEUD be granted, the implications include uncertainty in the future application of the planning regime in relation to the pier and other areas of the river bed within the jurisdiction of RBK&C. This almost certainly would therefore trigger attempts to introduce mega houseboats also at Chelsea Reach, further blocking historic views of the Thames and severely damaging its heritage aspects. It would also effectively destroy the much loved, established and traditional character of the Chelsea Reach houseboat community.

The Trust, together with The Chelsea Society and CRBA, has twice met with the Leader and Deputy Leader of the Council and planning staff to express the concerns of its members and the wider community. At the recent 25th September public meeting of the Chelsea Society and Residents' Associations with the Deputy Leaders of the Council, Councillor Will Pascall made the welcome statement that the Council intended to take further senior legal advice with a view to meeting the community's concerns and objections most effectively.

At present the matter is scheduled to go before the RBK&C Planning Committee on the 24th October 2017. Those who have not done so are invited to submit objections before that date, we suggest no later than Friday 20th October. ●

Article: David Waddell

HOW TO OBJECT:

On the web

🌐 <http://tinyurl.com/cadoganpier>

By email

✉️ garaham.stallwood@rbkc.gov.uk and
✉️ to Emily.walsh@rbkc.gov.org

More information including a simple objection format is available at 'Mooring's at Chelsea' on the CWT website

🌐 www.cheynewalktrust.org

Cheyne Walk receives

SEAL OF APPROVAL

Chelsea is used to attracting tourists from around the world but local resident Richard Braine was surprised the other day to find this dapper seal sightseeing on the riverbank by 109 Cheyne Walk. The return of aquatic life to the Thames is a victory for environmentalists and we look forward to seeing more 'Chelseals' in future! ●



Seal on the riverbank by 109 Cheyne Walk.



Knight Frank's Rupert des Forges reports the latest trends

CHELSEA PROPERTY UPDATE

Cautious optimism seems to be the mood. The impact of political events and stamp duty changes means a comparison of market performance in 2017 with previous years is not straightforward. However, an improvement on last year is clearly discernible - although any recovery remains relatively shallow, in line with our forecast for a broadly flat price movement this year.

On a local level, the prime market in Chelsea has enjoyed a better year too, with volumes up for house sales from a historic low of 2016. Accepting the new landscape, vendors have lowered their prices to meet expectations. Chelsea remains a destination for buyers from a broad spectrum of countries, most notably from Europe and, interestingly, China.

A recovery in transaction volumes in prime central London continued through the summer as asking price reductions

stimulated demand. The number of residential exchanges was 5% higher in the first seven months of 2017 than in the same period in 2016. As demand and activity tentatively rise, so the rate of price declines has slowed. Annual growth was trimmed to -5.4% August, the lowest rate since November 2016.

Higher-value properties outperformed lower-value properties for the sixth consecutive month as the market adapts to higher rates of stamp duty. Prices between £5 million and £10 million fell 3.7% in the year to August 2017 compared to the overall decline of -5.4%.

The numbers show a healthy market going forward. Knight Frank demand indicators show an 8% rise in the number of new prospective buyers registering between January and August 2017 compared to the same period last year. Viewing levels were also up by 14%. ●

Rupert des Forges, Partner. Head of Knightsbridge, Knight Frank LLP
60 Sloane Avenue, London SW3 3DD. ✉️ rupert.desforges@knightfrank.com



The new-look National Army Museum on Royal Hospital Road.

Chelsea's new National Army Museum is **READY FOR ACTION**

“We are not a museum about war,” insists Eloise Maxwell, the dynamic communications director of the new National Army Museum, which has recently emerged as one of Chelsea’s most exciting new attractions. She is addressing a common misconception that the museum is about past battles rather than future brilliance.

After a three-year, £23 million upgrade, gone are the dusty

dioramas and dimly-lit displays. The staid, cramped former interior has been replaced by a bright, open space where themed galleries brimming with interactive displays engage all ages. A gleaming glass façade now runs along the length of the building, providing an attractive setting for a

ONE OF CHELSEA'S MOST EXCITING NEW ATTRACTIONS.

new delightful café and coffee shop. There’s also an imaginative gift shop.

The sparkling new museum is keen to reveal the profound role the Army plays in the life of the country. And while military history is woven into the fabric of the museum, which traces its development from 1660 to

the high-tech forces deployed around the world today, its exhibits reveal much more.

The collection is a treasure trove of Army lore where every object tells a story. There’s Florence Nightingale’s lamp, Lawrence of Arabia’s robes and legendary dagger, the Duke of Wellington’s cocked hat and even the skeleton of Napoleon’s beloved horse, Marengo.



T.E. Lawrence’s original Arabian robes and dagger.

Families will enjoy the Play Base, a soft play area for babies, toddlers and children, which hosts hour-long sessions covering a wide range of creative activities which can be booked in advance (£4.50 per child, www.nam.ac.uk, drop-ins on a first come, first served basis).

Thanks to state-of-the-art interactive displays and simulators, older children will be fascinated by opportunities to learn about life as a soldier: learn to drive a tank, wear a uniform, even command a covert operation behind enemy lines. Would-be recruits can get the real boot camp treatment via a virtual sergeant at arms who barks out drill instructions (minus the colourful language.)

Now that 50% more of the permanent collection is on view, visitors will appreciate the variety of the displays. Along with the galleries, there are free lectures and tours, and a series of exhibitions (such as the current 'Warpaint', which celebrates the vital role artists have played in the Army), all adding to the creative energy propelling this venerable institution into the 21st century. ●



The new Society and the Army gallery.



Visitors at Tank Battle.



A little drummer boy explores the interactive displays.

NATIONAL ARMY MUSEUM

National Army Museum

Royal Hospital Road, Chelsea, London, SW3 4HT

Open daily from 10am - 5.30pm, last admission at 5pm.

Free admission.

www.nam.ac.uk



The café, with panoramic views of Royal Hospital Road, also has free wifi.



Cake table café

In memoriam:
DAVID LE LAY



David Le Lay leads one of his popular Whistler Society walkabouts in old Chelsea.

David Le Lay, Chairman of the Chelsea Society for 22 years, died on 17 January 2017. David was both a member and active supporter of the Cheyne Walk Trust and in fact was due to speak at the 2016 AGM as our guest speaker and Chairman of the Whistler Society on “Whistler and Cheyne Walk”. Sadly, in the event, he was too ill to deliver what would have been undoubtedly an amusing and enthralling talk. He founded the Whistler Society in 2012 and had also been responsible for raising the funds to erect in 2005 the splendid statue by Nicholas Dumbleby of Whistler gazing

DAVID WAS BOTH AN ACTIVE MEMBER AND SUPPORTER OF THE CHEYNE WALK TRUST

out over Chelsea Reach at the corner of Battersea Bridge, not far from one of the artist’s homes at 96 Cheyne Walk. David was an architect and champion of the borough of Chelsea, famous for his lectures and Chelsea walks, part of his devotion to sharing his deep knowledge of Chelsea and its buildings and heritage with all who were interested.

Born in Jersey in 1945, his design skills were recognised as a schoolboy when a float he designed for the Jersey Battle of Flowers gained a prize. He studied at Canterbury School of Architecture and at the Regent Street Polytechnic and worked with Sir Geoffrey Jellicoe’s practice before

establishing his own aged 25 in Chelsea in 1970. He specialised in residential developments on sensitive sites and the restoration and adaptation of listed buildings. His significant involvement with the Chelsea Society began when he was asked to suggest a scheme for what was a fenced-off space on the King’s Road known as the Old Burial Ground to celebrate the Queen’s Silver Jubilee and the Society’s Golden Jubilee, the result was the attractive garden known as Dovehouse Green.

As Chairman of the Chelsea Society he was a major opponent of the tall buildings that are now a significant and unwelcome intrusion on Chelsea’s river-scape.

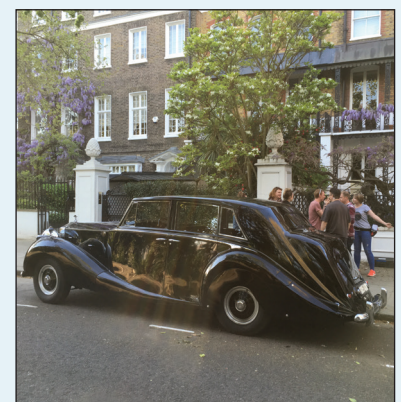
A man of many parts, David was an enthusiastic member of the London Sketch Club where he hosted regular designers and architects’ evenings. He was President of the Franco-British Union of Architects, a church warden of Christ Church Chelsea and a Council member of the Chelsea Arts Club and, latterly and perhaps surprisingly, a popular member of a club on Canvey Island that staged boxing contests. Our sympathies go out to his partner of 52 years, John Thacker, with whom he had entered into a civil partnership. ●

Cheyne Walk stars in award-winning series
‘THE CROWN’

Early this summer, residents of Cheyne Walk between Oakley Street and Royal Hospital Road were transported back in time, as filming for the hit series ‘The Crown’ turned the street into a vintage scene from the 1950s. The location crew worked for hours to remove any giveaway traces of 2017. The actors, all in period evening dress, added a touch of glamour as they emerged in top hats and tiaras from gleaming classic cars including a fabulous Rolls Royce, apparently loaned by the Palace. The series starts again on Netflix on 8th December. Keep your eyes peeled. ●



Claire Foy as Queen Elizabeth II and Matt Smith as Prince Philip resume The Crown in December.



A vintage Rolls Royce sets the stage as the crew put final touches on the scene.

Portrait of a LADY



'Arrangement in Grey and Black No.1,' by James McNeill Whistler. Musée D'Orsay.

Anna Whistler is known as the subject of one of the most famous portraits in Western art history: 'Arrangement in Grey and Black No.1,' more commonly known as 'Whistler's Mother.' One legend claims she was a stand-in for a model who failed to show up. But as art historian Georgia Toutziari discovered, she has her own story to tell.

Georgia first "met" Anna Whistler while writing her PhD dissertation, an annotation of Anna's correspondence, on a scholarship at Glasgow University's Centre for Whistler Studies. Georgia spent three years reading some 300 letters, tracing Anna's movements across steamships and continents from Massachusetts to Russia (her husband was a railroad engineer, appointed by Tsar Nicholas I to build the St Petersburg-Moscow line) and finally to Britain. "At the age of 44, she became a widow with not much income and two boys – what do you do?" asks Georgia. "Well, she travelled incessantly." She returned to the US and lodged with relatives and friends in various states ensuring that her boys were well educated.

Anna's arrival in Chelsea in 1864 (she would stay on and off for the next ten years) put a damper on her son's bohemian lifestyle. "He made his name in Chelsea and London," says Georgia, "but never quite felt that he was appreciated by the English."

Whistler enjoyed playing provocateur, scandalizing the art establishment. By the time of his mother's arrival, the eccentric American had achieved both fame and notoriety. He led what Georgia calls "a -bohemian life," often deep in debt to everyone from the tailor to the grocer to the paint-seller, and the cast of muses that populate his paintings could frequently be found in his studio.

"All of a sudden in the middle of all this my mother arrives from the United States!" wrote Whistler to Fantin Latour. "I had a week or so to empty my house and purify it from cellar to attic!" ("How can you forget a line like that?" Georgia comments.) Before Anna's arrival, he had to eject his mistress, Joanna Hiffennan, the fiery redhead associated with the Pre-Raphaelite "cult of stunners," portrayed in his 'Symphony in White No. 2.' How much did Anna know about her son's activities? "I think she knew just about everything," says Georgia.

Far from being the severe, sedentary Episcopal lady in a white bonnet of the "Arrangement," Anna was an adventurer of sorts herself. "Anna crossed the Atlantic eleven times. That's an extraordinary thing for anyone, never mind a woman." Georgia initially typecast Anna, she says, based on the lengthy Bible quotations that dominate her letters. "When I got past that," she says, "I actually realized not just what an incredible life she had, but what an incredible person she - how brave, pioneer in her actions, how clever, culturally attuned, how incredibly humane." She eventually took over as Whistler's agent, providing the hard sell to his exhibitionist antics by maintaining a correspondence with supporters and patrons. "She was a networker," says Georgia. "She had skills that would be highly valued in today's world."

Anna's correspondence sheds light on the Cheyne Walk of the late Victorian era. She was a regular at Chelsea Old Church, striking up a friendship with the vicar and forcing her son to attend services. She writes of taking steamers down the Thames into town with her

son to see friends, avoiding the traffic on the Embankment. She gives accounts of watching him painting late in the evening after going out on the river, trying to capture the colors of the light on the docks before night fell.

The coterie that surrounded the eccentric painter has attracted a small group of scholars and curators from all over the world. Georgia has collaborated for five years with Daniel Sutherland, a distinguished professor and biographer of James Whistler, to produce a biography of Anna, Whistler's Mother: Portrait of an Extraordinary Life, due to be published by Yale University Press early next year.

Getting to know somebody's life so well produces an uncanny intimacy. "So many times she asks her young son James, Burn this scrawl when you have read it and write me a neater letter as I promise you to do." says Georgia. "And there's me reading it two hundred years later." She often wonders what it would be like to meet Anna. "I would have to be quite careful because she was slightly shy, and I'm not. But I would be thrilled." ● Article: Hallie Nell Swanson



Anna Whistler, circa 1850s.

ANNA WHISTLER TALK



Dr Georgia Toutziari will speak on Anna Whistler at the Cheyne Walk Trust's Annual General Meeting on 8th November.

You can read the Centre for Whistler Studies' archive of correspondence at www.whistler.arts.gla.ac.uk. Readers interested in Whistler and his circle should consider joining the Whistler Society. For more information, visit www.whistlersociety.org.

Chelsea
Physic
Garden
FOUNDED
1673



Christmas Fair



25 & 26 November 2017, 10am-4pm

66 Royal Hospital Road, Chelsea, London, SW3 4HS

chelseaphysicgarden.co.uk



THE HEATHERLEY SCHOOL OF FINE ART & THE CHEYNE WALK TRUST



ART COMPETITION

Theme: Chelsea Life

Proceeds towards funding a young person's bursary

1st Prize £1000

Reception, Prize-giving and Auction 16th November 2017
at The Heatherley School of Fine Art

Entry forms available to download at: www.heatherleys.org/art-competition.php
or by application to: The Heatherley School of Fine Art, 75 Lots Road, London SW10 0RN
All work to be submitted by Thursday 9 November 2017
For terms and condition see website

HEATHERLEY'S



Cheyne Walk Trust
COMMITTEE

The Committee seeks to represent members to best effect in the objectives of working to ensure that Chelsea riverside continues to be an attractive and enjoyable place in which to live and in seeking both to protect and enhance its many qualities as a residential area. We would welcome wider member representation on your committee, in particular if you are interested in planning issues and/or involvement with our newsletter. We meet informally every two months or so, hence it is not too onerous a commitment. If you are interested please contact David Waddell on 0207 352 9353 or by mail to chmn@cheynewalktrust.org.

The Cheyne Walk Newsletter is issued to Cheyne Walk Trust members. The Cheyne Walk Trust represents the interests of Chelsea Riverside residents in maintaining and enhancing the historic area in which they live.

CONTACT:

- Col David Waddell (Chairman)
☎ 020 7352 9353
- Dr May Maguire (Secretary)
☎ 020 7352 0030
- Mr Andrew Thompson (Membership)
☎ 020 3073 7622
- Hallie Swanson (Editor)
☎ 07855 206 531
✉ halliecreative@aol.com
- 🌐 www.cheynewalktrust.org

WE NEED OUR MEMBERS' E-MAIL ADDRESSES PLEASE!

Please would members be kind enough to provide us with their e-mail address. This will be kept confidential and not be released to any commercial concerns. It will enable us to contact members to advise matters of significant local interest and, if appropriate seek their views. Topical items where we have sought views include: Basement Planning Guidance; The Thames Sewer; Crossrail 2; 3rd Runway at Heathrow; Development of the Chelsea Hospitals; etc. Please simply send a mail with "CWT Member Address" in the subject line to: memsec@cheynewalktrust.org and add your name and address in the text field. You will receive an acknowledgement in response.

